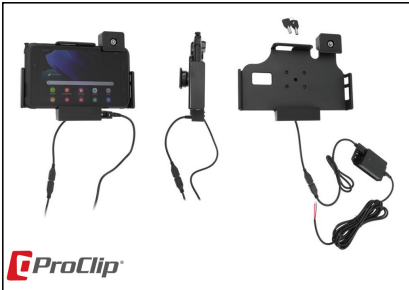


**Item No. 736225 - Charging Holder with Tilt-Swivel, USB Host Port, Key Lock and Hard-Wired Power Supply**



**Compatible with:**  
 Samsung Galaxy Tab Active3  
 Samsung Galaxy Tab Active2

**View Color Instructions**



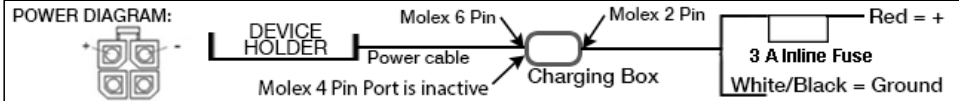
**Important:**

Self-installation instructions and advice are provided for your convenience. It is your responsibility to determine if you have the knowledge, skills, and physical ability required to properly perform an installation. ProClip USA, Inc. shall have no liability for damage or injury resulting from the installation or use of any ProClip or third party products. It is your responsibility to ensure that all products are installed in adherence with local laws and regulations and in such a manner as to allow a vehicle to be operated safely and without distraction. ProClip USA, Inc. product warranties do not cover the installation, removal or reinstallation of any product.

**Power Rating:** Input Voltage: 10-30 VDC, 1.1A Output Voltage: 5 VDC, 2A

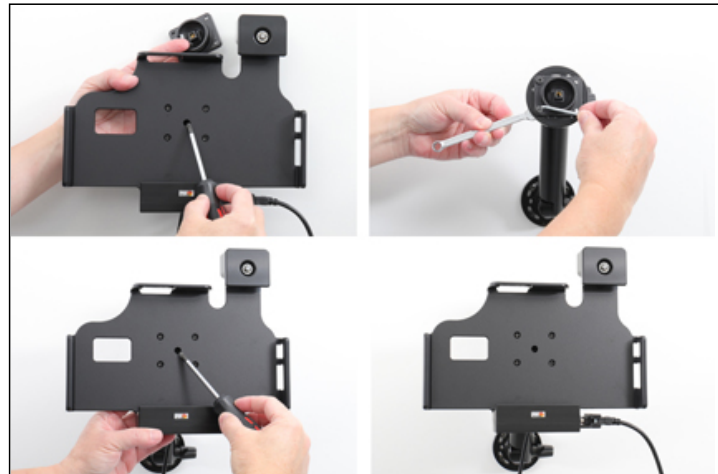
**Wiring:** Follow the diagram below. Route the wire from the holder behind the dashboard and connect it to a power source; White or Black to ground or the vehicle chassis, and Red via the 2A in-line fuse to a positive power source. Professional installation is recommended.

**Attention:** Carefully read all instructions and review the images before installing this product.



**1. To attach an accessory:**

Plug the accessory's USB plug into the USB host port. Secure the USB cord in place with the included retention clip and Allen wrench.



**2. Mounting the Holder:**

Remove the screw in the center to release the tilt-swivel base plate from the holder. Using the pre-drilled holes and included fasteners, attach the tilt-swivel base plate to any AMPs compatible mount, pedestal, or flat surface. (Pedestal shown here not included). Re-attach the holder with the center screw. Leave the screw slightly loose to allow adjustments or tighten fully to lock the desired angle.



**3. Inserting the Tablet:**

Align the bottom of the tablet and allow the tablet to seat to the bottom of the holder before pressing the top of the tablet into place. The high side walls ensure the tablet docks from the front, preventing damage to the pogo pins.

**Removing the Tablet:**

Using a thumb or additional hand, slightly lift the top support up and pull the tablet towards you. Once free, lift up and away from the bottom of the holder to free the tablet.



**4. USB-C Port and Headphone Jack:**

This holder has an opening for the USB-C port and headphone jack while docked. **Note** Only the Tab Active3 supports using the USB-C port as a DisplayPort while docked. The Tab Active2 disables the USB-C port when docked.

## Returns

All returns must be made within thirty (30) days of the delivery date and include proof of purchase, a copy of your original order, or invoice. No products shipped hereunder may be returned without ProClip USA's prior approval. In order to return a product, the buyer must obtain an RMA number (Return Merchandise Authorization Number). **Items returned without a valid RMA number may be rejected. Items that are open, used, damaged, or returned without all original components may have a restocking fee applied.**

## Limited Warranty and Liabilities

ProClip warrants that the Products will be free of defects in materials and workmanship for a period of one (1) year from the date of purchase. If any Product should become defective within the warranty period, ProClip, at its option, will replace it, repair it or refund the purchase price. Repair or replacement parts or Products will be furnished on an exchange basis and will either be new or reconditioned. All replaced Products shall become the property of ProClip. Warranty service is available to you by delivering the Product during the warranty period to the company it was purchased from or to ProClip at 4915 Voges Rd., Madison, WI 53718 USA and providing proof of purchase, price and date. If shipped to ProClip, the buyer must first call ProClip at +1 800-296-3212 or e-mail ProClip at [returns@proclipusa.com](mailto:returns@proclipusa.com) to obtain a return approval and return number. You will bear all shipping, packaging and insurance costs and all other costs, excluding labor and parts, necessary to effectuate repair, replacement or refund under this warranty. For more information on how to obtain warranty service, write, e-mail or telephone ProClip at 4915 Voges Rd., Madison, WI 53718 USA. Tel: +1 800-296-3212, e-mail: [returns@proclipusa.com](mailto:returns@proclipusa.com).

THIS LIMITED WARRANTY DOES NOT EXTEND TO ANY PRODUCT WHICH HAS BEEN DAMAGED AS A RESULT OF ACCIDENT, MISUSE, ABUSE OR AS A RESULT OF UNAUTHORIZED SERVICE. THIS WARRANTY IS IN LIEU OF ALL OTHER EXPRESS WARRANTIES FOR THIS PRODUCT. IMPLIED WARRANTIES, INCLUDING THOSE OF MERCHANTABILITY, FITNESS FOR A PARTICULAR PURPOSE AND NON-INFRINGEMENT SHALL HAVE NO GREATER DURATION THAN 1 YEAR FROM THE DATE OF PURCHASE. IN THE EVENT THIS PRODUCT BECOMES DEFECTIVE DURING THE WARRANTY PERIOD, THE PURCHASER'S EXCLUSIVE REMEDY SHALL BE REPAIR, REPLACEMENT OR REFUND AS PROVIDED ABOVE. IN NO EVENT SHALL PROCLIP BE LIABLE FOR INCIDENTAL OR CONSEQUENTIAL DAMAGES, INCLUDING WITHOUT LIMITATION LOSS OF PROPERTY, ARISING FROM BREACH OF ANY EXPRESSED OR IMPLIED WARRANTY. PROCLIP DISCLAIMS ALL WARRANTIES, EXPRESS OR IMPLIED, OTHER THAN THOSE SET FORTH ABOVE. IN NO EVENT WILL PROCLIP BE LIABLE TO YOU OR ANY THIRD PARTY FOR ANY INCIDENTAL OR CONSEQUENTIAL DAMAGES, INCLUDING, WITHOUT LIMITATION, INDIRECT, SPECIAL, PUNITIVE, OR EXEMPLARY DAMAGES, INCLUDING ATTORNEY FEES ARISING OUT OF THE USE OF OR THE INABILITY TO USE THE PRODUCTS, OR FOR ANY CLAIM BY ANY OTHER PARTY, EVEN IF PROCLIP HAS BEEN ADVISED OF THE POSSIBILITY OF SUCH DAMAGES.

**Regulatory information:** [www.proclipusa.com/regulatory.html](http://www.proclipusa.com/regulatory.html)